

Proposal to relocate and expand Silsoe Church of England Voluntary Controlled Lower School to provide new lower school places for children in Silsoe, Bedfordshire



Notice is given in accordance with section 19(1) of the Education and Inspections Act 2006 that Central Bedfordshire Council intends to make a prescribed alteration to Silsoe Church of England Voluntary Controlled Lower School, High Street, Silsoe, Bedfordshire MK45 4ES from 1 September 2016.

The intended prescribed alteration is -

to relocate Silsoe Church of England Voluntary Controlled Lower School to a site within the former Cranfield University Campus in Silsoe

to expand the school from a 135 place lower school for pupils aged 4+ to 9 to a 225 place lower school for pupils aged 4+ to 9

to relocate the Special Education Needs provision, for Behaviour, Emotional and Social Difficulty (BESD), to the new school site and to expand the provision from 6 to 8 places.

The current capacity of the school is 135. Following implementation the proposed capacity will be 225. The current number of pupils registered at the school is 138.

The admission number for the current school is 27 for each year group and the proposed admission number will be 45 for each year group.

This Notice is an extract from the complete proposal. Copies of the complete proposal can be obtained from: The Information Manager, Central Bedfordshire Council, Room DC2, Watling House, High Street North, Dunstable, Beds, LU6 1LF. It can also be viewed on the Council's website at www.centralbedfordshire.gov.uk/publicstatutorynotices and on the school's website at <http://www.silsoelower.ic.org/>

Within four weeks from the date of publication of this proposal, any person may support, object to or make comments on the proposal by sending them to the Deputy Chief Executive / Director of Children's Services, Central Bedfordshire Council, Priory House, Chicksands, Shefford, Beds, SG17 5TQ.

Signed: Edwina Grant

Deputy Chief Executive / Director of Children's Services

Publication Date: 2 June 2014

Explanatory notes:

New lower school places are required in Silsoe as a result of significant housing development within the former Cranfield University Campus. Up to 344 dwellings are forecast to be built within this development by 2018.

PROPOSAL FOR PRESCRIBED ALTERATIONS

Dated - Monday 2 June 2014



Central Bedfordshire

1 - Name of Proposer

(Local Education Authority or Governing Body)

Central Bedfordshire Council

2 - School Name

Silsoe Church of England Voluntary Controlled Lower School

3 - School Address

High Street,
Silsoe
Bedfordshire
MK45 4ES

4 - Description of proposed prescribed alteration

To **relocate** Silsoe CofE VC Lower School from its current address at High Street, Silsoe to a new site within the former Cranfield University Campus, off Barton Road, Silsoe

and to **expand** Silsoe CofE VC Lower School from its current capacity of 135 places to 225 places, with a published admission number of 45.

The existing Special Education Needs provision, for Behaviour, Emotional and Social Difficulty, at Silsoe Cof E VC Lower school will relocate onto the new site. The provision will be increased from 6 to 8 places and the school will continue to provide support for vulnerable learners by integrating appropriate Special Educational Needs provision within the mainstream school.

The school's new site will also provide pre school provision for children from 2 years by expanding and relocating the existing provision alongside the school.

5 – Evidence of demand

Up to 2018, 344 dwellings are forecast to be built within the former Cranfield University Campus development in Silsoe. The development is expected to produce approximately 15 children per year group. To manage this it is proposed that Silsoe CofE VC Lower School relocates to a new site within the development, providing a new building to allow the school to increase its

intake from September 2016.

The existing school is located on a limited site in Silsoe and for this reason, expansion of the existing school on its current site is not recommended.

The school is an Ofsted 'Outstanding' school. It has a capacity for 135 and is now coming under increasing pressure for places from the new development. It is proposed that the new school should cater for up to 225 pupils in the future and to also accommodate the SEN unit attached to the school.

It will mean expansion of a popular and Ofsted rated Outstanding school and will promote further partnership working with the outreach work currently provided through the Children's Centre.

A consultation was carried out regarding the proposal from 3 March to 31 March 2014. The consultation document is attached at appendix.

Copies of the consultation document were provided to –

- The Governing Body of Silsoe CofE VC Lower School
- The staff of Silsoe CofE VC Lower School
- The parents and carers of Silsoe CofE VC Lower School

And copies of the consultation document were made available to –

- The Member of Parliament for Silsoe
- Silsoe Parish Council
- Neighbouring local authorities to Central Bedfordshire Council
- Local dioceses
- The Members of Central Bedfordshire Council
- All schools and academies within Central Bedfordshire

A press release was issued advising of the consultation.

The consultation document was also available on the Central Bedfordshire Council website with an on-line response facility.

Two meetings were held at Silsoe Lower School on 17 March 2014; the first at 4.00 pm for school staff and governors, followed by the second meeting at 7.00 for parents, carers and the general public .

The presentation that was given at both meetings is attached at appendix Notes of both meetings which include the concerns and questions that were raised, are attached at appendix

During the 4 week consultation, 24 responses were received, 88% of which were in favour of the proposal. The results of the consultation are available at appendix

6 – Objectives

Silsoe CofE VC Lower School is the only lower school within the village of Silsoe and is an Ofsted 'Outstanding' school. The current school has a capacity for 135 and is now coming under increasing pressure for places from the new housing development.

Central Bedfordshire Council's Policy Principles on Pupil Place Planning in Schools require the proposal to be supported by a business case that establishes a guarantee of the quality of the new places being added to the system. The business case that has been submitted by Silsoe CofE VC Lower School has provided confirmation of this.

A feasibility study is to be commissioned to inform the design process and to ensure that the capital investment in the expansion of the school also seeks opportunities to create inspirational learning environments for the school and to maximise community use

7 – The effect of the proposed alteration on other schools, academies and educational institutions within the area

Silsoe CofE VC Lower School is the only lower school within the village of Silsoe and therefore the only lower school which serves the Silsoe catchment area.

Silsoe CofE VC Lower School is a feeder school for Arnold Academy which has sufficient capacity to accommodate the additional children.

8 – Project costs

The proposed new school is contained within Central Bedfordshire Council's NewSchool Places Programme 2013/14 – 2018/19. The capital cost of the project is to be funded through the Council's New School Places programme.

9 – Implementation

It is proposed that the new school will be ready for the start of the new Autumn term in September 2016

10 – Procedure for responses; support, objections and comments

Within four weeks from the date of publication of this proposal (i.e. by Monday 30 June 2014), any person may support, object to or make comments on the proposal by sending them to the Deputy Chief Executive / Director Of Children's Services, Central Bedfordshire Council, Priory House, Chicksands, Shefford, Beds, SG17 5TQ



**Central
Bedfordshire**

Central Bedfordshire Council
www.centralbedfordshire.gov.uk

Appendix A

Consultation on the proposed relocation and expansion of Silsoe Church of England Voluntary Controlled Lower School

to provide new lower school places for
children in Silsoe

**Monday 3 March 2014 –
Monday 31 March 2014**

1. Introduction

Councils have a duty to ensure there are enough suitable school places for children aged 5-16 (as per Section 14 of the Education Act 1996). The Council's role is to promote parental choice, diversity, high standards and fair access to education (Education and Inspections Act 2006).

This document explains the reasons for proposing to relocate and expand Silsoe Church of England Voluntary Controlled (CofE VC) Lower School and how you can have your say.

2. Background

The Council has been working with schools in the area to review places and plan for the impact of demographic changes across the area over the next five years and beyond. The pressure on existing provision and the need for more places in Silsoe is clear.

New lower school places are required in Silsoe as a result of significant housing development within the former Cranfield University Campus. Up to 344 dwellings are forecast to be built within this development by 2018; the majority have been constructed already but are not fully occupied.

The existing lower school is located on a size limited site on High Street, Silsoe, and for this reason expansion of the existing school on the High Street site is not feasible.

The S106 agreement (by which the Council has obtained funds from the developer for education provision and community facilities) for the site of the former Cranfield University Campus included a requirement for a new school site to be located in conjunction with a proposed new community sports building and sports pitches, with a view that some of the facilities could be shared thereby making best use of the available resources.

3. Our proposal

The Council is proposing to provide the additional school places required by relocating and expanding Silsoe CofE VC Lower School.

The current school has a capacity for 135 and is coming under increasing pressure for places from the new development. It is proposed that the new school will cater for up to 240 pupils, although the design capacity of the new school is likely to reflect the ability to accommodate up to 300 pupils. The new school will also accommodate the Special Education Needs (SEN) unit which is currently attached to the school.

It is intended that the use of new community sports building and the new sports pitches will be shared between the school and the wider community. Silsoe Parish Council is working with Central Bedfordshire Council regarding the development and management of these facilities.

This proposal has been developed in consultation with the school's governing body and the St Alban's Diocese and both are supportive of this proposal.

The new school is scheduled to open in September 2016.

4. Why are the Governing Body of Silsoe CofE VC Lower School and Central Bedfordshire Council consulting with you?

This proposal constitutes the relocation and significant expansion of Silsoe CofE VC Lower School which requires both informal consultation and the publication of Statutory Proposals, in accordance with the Education and Inspections Act 2006. Informal consultation enables all interested parties to express their views on the proposal and thereby influence the decisions and actions to be taken by the Council regarding the additional provision of school places.

Starting on page four of this document you will find a list of Frequently Asked Questions which may help to address some immediate concerns that you may have.

5. The consultation process

You can **have your say via the online form** which is available on the Council's website at www.centralbedfordshire.gov.uk/consultations or you can complete pages six and seven of this document and return them to the FREEPOST address provided at the end of the form. Completed forms should be returned by **5.00pm Monday 31 March 2014**.

Separate meetings will be held with the staff, union representatives and governors of Silsoe CofE VC Lower School.

There will also be a **public meeting** which will be open to all interested parties. This meeting will be held at **Silsoe CofE VC Lower School** on **Monday 17 March** at **7.00pm**.

The timeline for the process will be –

Action	Timescale/Deadline
Four week consultation period begins	Monday 3 March 2014
Staff and Governors meeting	Monday 17 March 2014 at 4.00pm
Public meeting	Monday 17 March 2014 at 7.00pm
End of consultation period	Monday 31 March 2014
If decision is made to proceed with the proposal, Statutory Notices will be published on	Monday 2 June 2014
Four week period for the submission of comments and/or objections in response to the Statutory Notices	From Monday 2 June until Monday 30 June 2014
End of Statutory Notice period	Monday 30 June 2014
Final decision regarding the proposal to be made by the Council's Executive Committee on	Tuesday 19 August 2014

If a decision is made to relocate and permanently expand Silsoe CofE VC Lower School, formal implementation of the expansion will commence in September 2016, for the 2016/17 academic year, with the provision of permanent accommodation on the new site.

6. Frequently asked questions

Q – Does the Council have the land and the funds to provide this new school site?

A – The land will be transferred to the Council shortly. The costs are estimated at approximately £4.5m, although this could change as discussions regarding the design of the new school progress. The council is currently holding approximately £1.4m, which have been secured via developer contributions for education purposes under S106 agreements to cover this, with the balance due from Central Government grant funding.

Q – When will the new school site open?

A - Subject to obtaining all the necessary consents it is proposed that the new school site will be operational from September 2016.

Q – Are there any interim proposals in advance of the new accommodation being ready?

A - We are already working with the existing school to ensure that, as far as possible, parental requests can be met ahead of the new accommodation being available. For example, Silsoe CofE VC Lower School has agreed to increase its admissions for in-area pupils on its existing site in advance of the new accommodation being available and the Council has agreed to provide additional temporary accommodation for this, if needed, in September 2015.

Q –What new facilities will be provided at the new school site to accommodate the increased number of children?

A – A feasibility study will be commissioned to inform the design process and ensure that the new school provides opportunities to create inspirational learning environments for the school. The relocation of the existing Special Education Needs provision on site will also continue to provide support for vulnerable learners by integrating appropriate provision within the mainstream school.

Q – How will the school share the new community sports building with the village?

A – A new community sports building together with two sports pitches and a Multi Use Games Area (MUGA) will be built adjacent to the proposed new school. It is planned that the school will have access to these facilities. The anticipated needs of the children have been accommodated into the design specification for the community sports building e.g. secure access. Exact details of the schools requirements are yet to be determined, as are the management arrangements for the new community sports building and sports pitches. These discussions will begin shortly.

Separate public meetings are being planned by Silsoe Parish Council to engage residents in the development of the community sports building and to coincide with this consultation for the new school.

Q - Can the school be assured that their need for sports facilities and worship facilities will not be compromised by sharing the community facilities?

A – Access and management arrangements for the shared community facilities have yet to be determined but the design of the school's facilities will be informed by Government design guidance to ensure that the school's use of and access to the facilities are not compromised.

Q – Will there be sufficient parking space available for parents who will have to transport their children from the far end of the village.

A – The proposed relocation and expansion of the school is to provide for the local community of Silsoe. A requirement of the planning process for the design and layout of the new school will be the production of a travel plan. This travel plan is required to articulate how the school will continue to promote sustainable modes of transport. This may include the provision of a walking bus.

Q - Will Silsoe CofE VC Lower School be able to provide a full and varied curriculum on the new site?

A – The curriculum of Silsoe CofE VC Lower School is well designed and matched to the needs, abilities, interests and aspirations of all children. Staff regularly review the curriculum currently and will plan the curriculum for the new school site to meet the requirements of the national curriculum and the needs of the community.

Q – What provision will be made for early years and ‘wrap around’ care?

A- Silsoe Pre School is situated in the grounds of the current lower school site and caters for children aged 2½ to 4. ‘Wrap around care’ is provided by Silsoe CofE VC Lower School both before and after school and is available for lower school children and for children attending their feeder middle schools. These facilities will transfer to the new site.

Q - Will the catchment area and admissions procedure for Silsoe CofE VC Lower School stay the same?

A – Yes, the catchment area and admissions procedure will remain the same.

Q – Has the Council considered any alternative solutions other than the relocation and expansion of Silsoe CofE VC Lower School?

A – Yes, other solutions have been considered. This proposal will provide local places for local children promoting sustainable modes of travel and will create a more financially and educationally viable lower school, close to the suggested optimum size of 300 places, and will also mean the expansion of a popular and Ofsted rated ‘Outstanding’ school.

Q - Are 240 places sufficient for the village? If the village continues to expand will there be capacity to extend the school to the optimum 300 place size?

A – Current pupil forecasts support the proposed expansion to 240 places, although the physical design capacity of the school building will provide for flexibility.

Q –What will happen to the current school site? Will it be retained as a facility for the village’s young people?

A – No consideration has yet been given to the future of the current school site. The Council and the Church of England Diocese will consider the matter in due course and any proposals will be subject to further consultation processes.

There may be other questions you wish to raise and we will be happy to respond to these at the public consultation meeting on 17 March.

For more information about this proposal please contact Sue Barrow by telephone on 0300 300 5700 or email sue.barrow@centralbedfordshire.gov.uk

**Edwina Grant, Deputy Chief Executive / Director of Children’s Services
Central Bedfordshire Council, Priory House, Monks Walk, Chicksands, Shefford
SG17 5TQ**



Appendix B

Consultation on the proposed expansion of Silsoe Church of England Voluntary Controlled Lower School

Monday 3 March – Monday 31 March 2014

Silsoe CofE VC Lower School

Introductions:

Susan Purdue – Head teacher, Silsoe Cof E VC Lower School

Reverend Holroyd – Chair of Governors, Silsoe Cof E VC Lower School

Rob Parsons – Head of School Organisation, Admissions and Capital Planning

Lydia Braisher – Admissions Manager

Sarah Hughes – Community Engagement Manager

Silsoe CofE VC Lower School

Statutory Responsibilities:

Education Act 1996 – to ensure that there are sufficient and suitable places for those who want them

Strategic Role:

- Commissioners of places, not necessarily providers
- Promoters of parental choice, diversity, high standards
- Fair Access

Silsoe CofE VC Lower School

Central Bedfordshire Council

School Organisation Plan

2013-2018 – Published September 2013

New School Places Programme

(both subject to annual review and rolled on a further year)

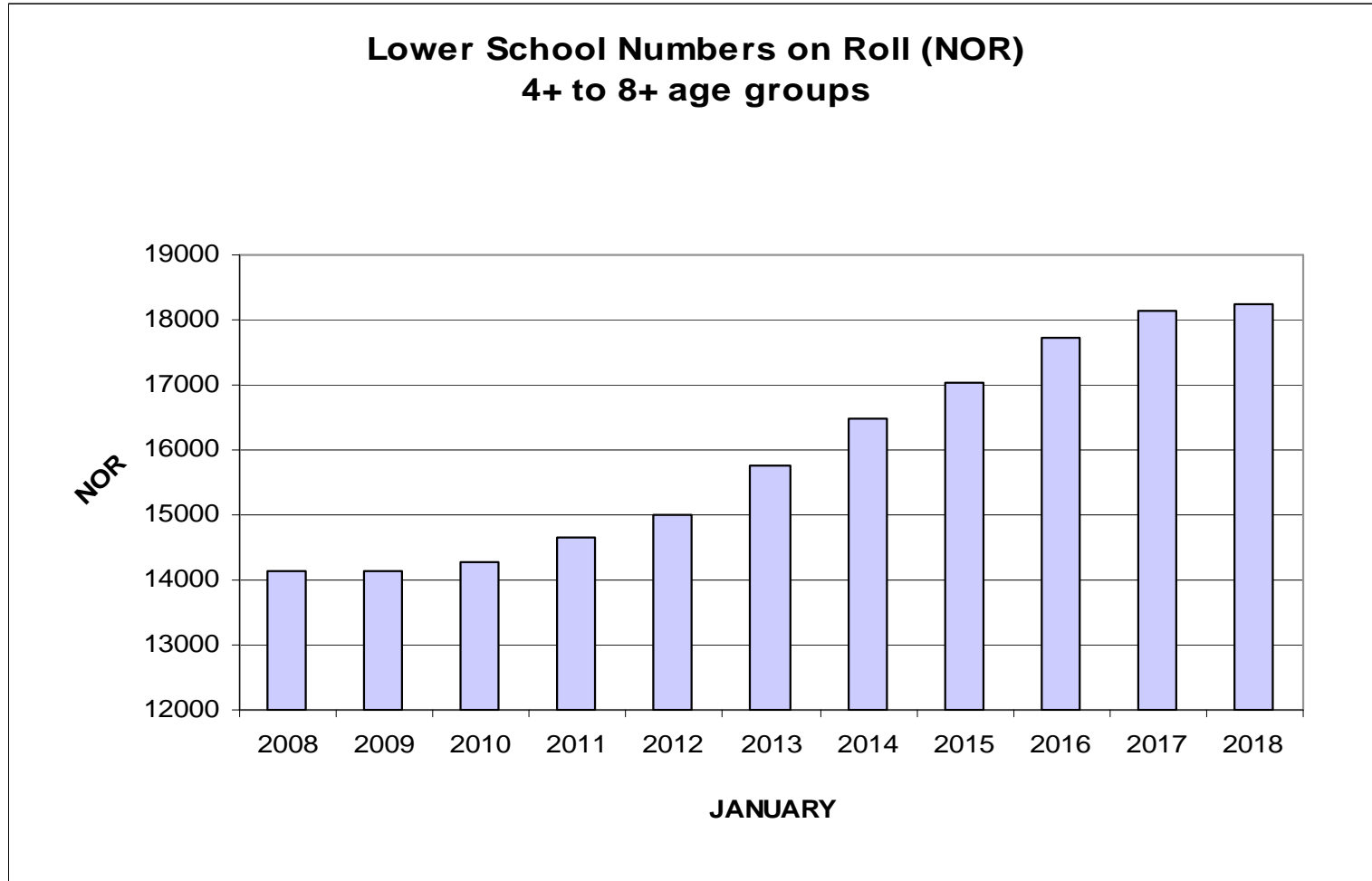
New schools

Expansions of existing schools and academies

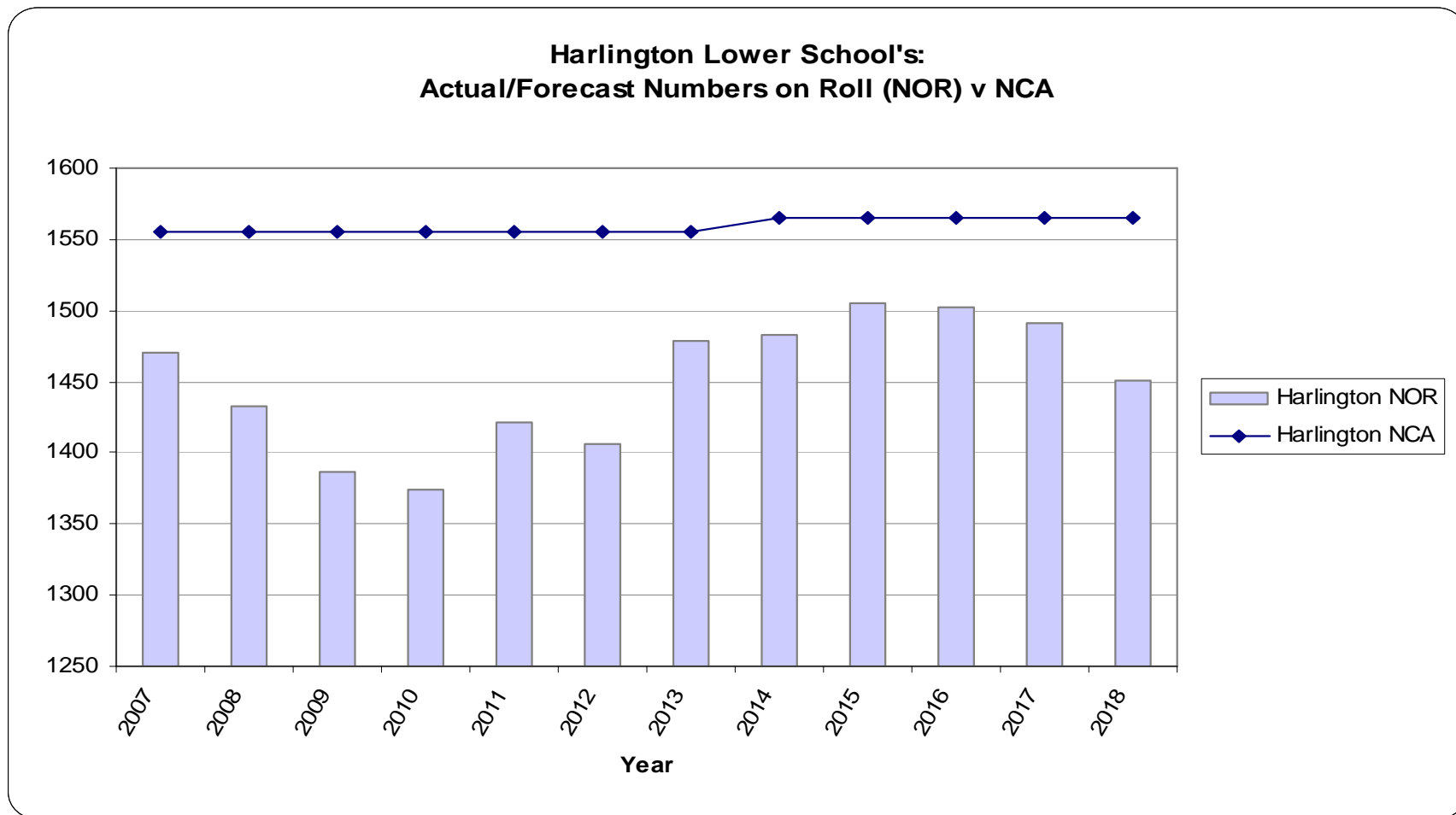
Enlargement and relocation of existing schools

£108m current gross value of programme

Silsoe CofE VC Lower School



Silsoe CofE VC Lower School



Silsoe CofE VC Lower School

HOUSING:

New lower school places are required in Silsoe as a result of significant housing development within the former Cranfield University Campus.

Up to 344 dwellings are forecast to be built within this development by 2018; the majority have been constructed already but are not fully occupied.

The existing lower school is located on a size limited site on High Street, Silsoe and for this reason, expansion of the existing school on the High Street site is not feasible.

Silsoe CofE VC Lower School

School's current PAN is 27, proposed to be 45 from 2016

Current number on roll is 134

Proposed new capacity will be 225 excl. pre school and SEN unit

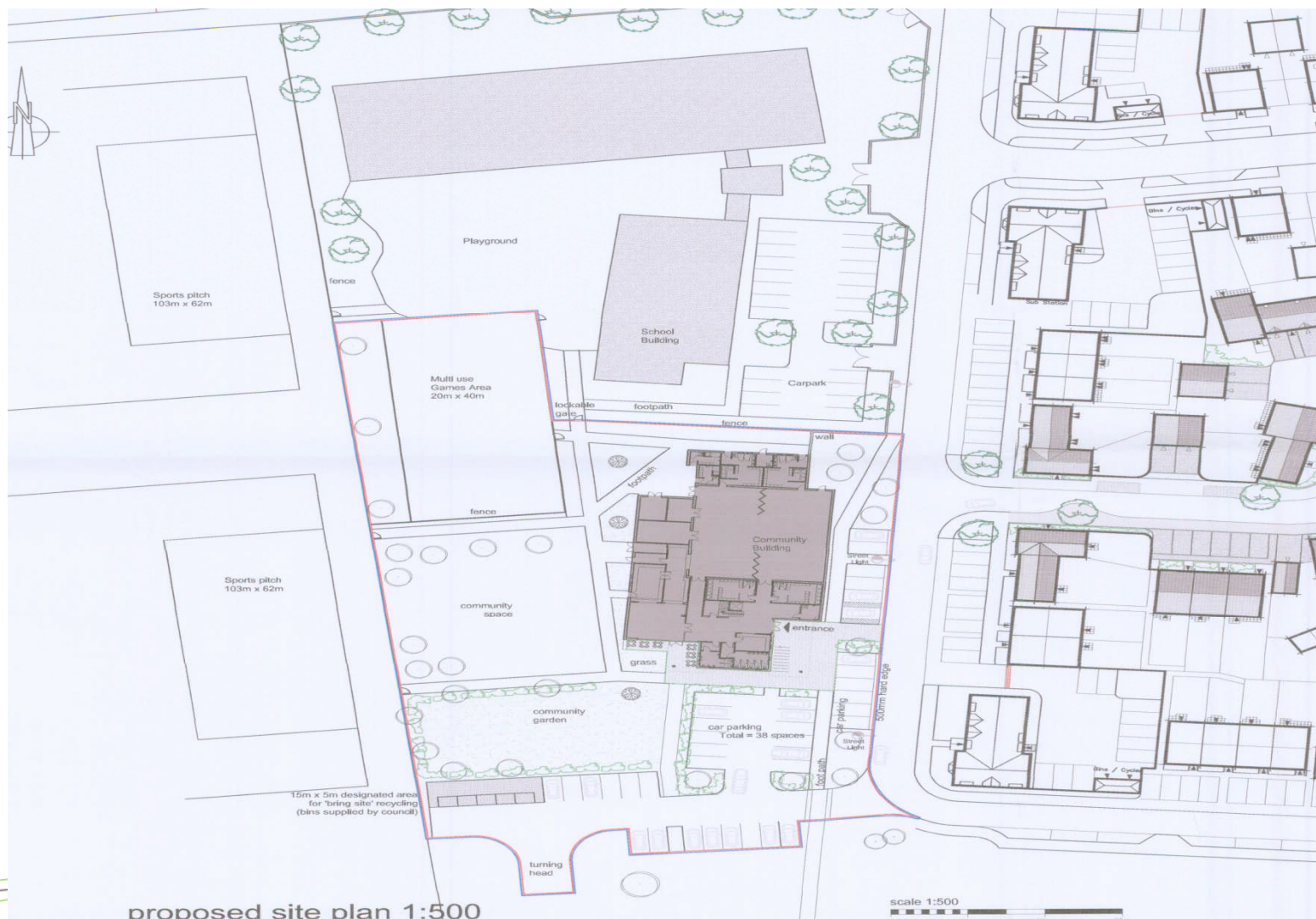
Starting School applications for September 2014 = 27 first preferences (20 from catchment)

Interim measures possible – additional classroom for September 2015

Silsoe CofE VC Lower School



Silsoe CofE VC Lower School



Silsoe CofE VC Lower School

Progress on built form:

Meetings with School and other stakeholders in the area

Review of existing design code for school

Work with Parish Council on use of Community Sports Hall and playing fields

Use of DfE area guidelines (BB99)

Accommodation schedule to be drafted

Development of brief for outline design proposals (feasibility study)

Silsoe Community Sports Building

Legacy from Cranfield University to the village of Silsoe
A community building with sports facilities

2 x badminton court size

Gym (upstairs)

Dance studio (downstairs)

MUGA (illuminated)

Sports Pitches – Football/Cricket

Community Green Space

Integrated Public Art

- Building
- Sports pitches

Building Status

- Negotiations building - completed December 2013.
- Building work due to start April 2014.

Community Consultation days

- 12th April 2014 Silsoe Village Hall 12-4
- 16th April 2014 SPS Annual Parish Meeting

Your ideas on use, activities, clubs email silsoepcfeedback@silsoe.org.uk

Silsoe CofE VC Lower School

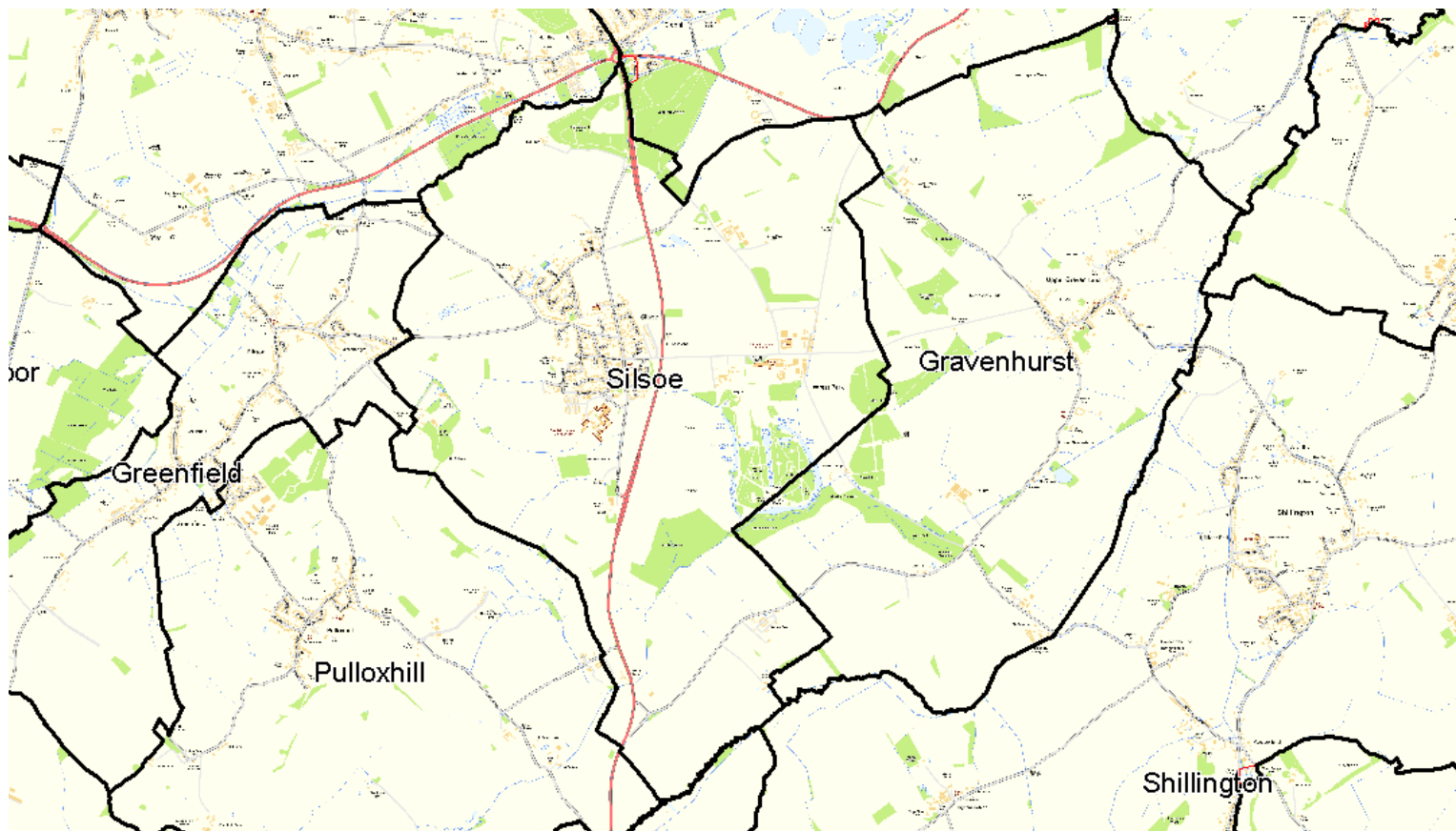
Proposed Admissions Criteria – September 2016

Published admissions number will be 45 places

- 1) All 'looked after' children or children who were previously 'looked after'
- 2) Children living in the catchment area with siblings at the school
- 3) Children living in the catchment area
- 4) Other children with siblings at the school
- 5) Children who live nearest to the school determined by straight line distance from the school site to the child's home address

Silsoe CofE VC Lower School

The catchment area will remain unchanged



Silsoe CofE VC Lower School

Process so far:

- December 2013 - Executive approved request to consult on the proposed relocation and expansion of Silsoe CofE VC Lower School
- Consultation launched on Monday 3 March 2014
- Meetings held at school on Monday 17 March 2014
- Consultation ends on Monday 31 March 2014

Silsoe CofE VC Lower School

Next Steps:

Report outcome of consultation

Statutory Public Notices – June 2014

School preparation of business case

Council's Executive Decision Making - August 2014

Outline and detailed design - August 2014 to January 2015

Planning approval - January 2015

Start on site - June 2015

Completion of building works - June/July 2016

Silsoe CofE VC Lower School

Consultation Document:

Available from School, Council offices, Council website.

Responses either on-line (preferably) or via post

Closing date – Monday 31 March 2014

Frequently asked questions

Your questions

**Consultation on the proposed expansion of
Silsoe CofE VC Lower School**

Queries / comments raised at meeting with staff and
governors – held at Silsoe CofE VC Lower School
on Monday 17 March 2014 at 4.00 pm



**Central
Bedfordshire**

Meeting led by –

Rob Parsons – Head of School Organisation, Admissions & Capital Planning
Lydia Braisher – Admissions Manager
Sarah Hughes – Community Engagement Manager
Susan Purdue – Head teacher, Silsoe CofE VC Lower School
Reverend Holroyd – Chair of Governors, Silsoe Cof E VC Lower School

Note taker - Sue Barrow – Information Manager

Susan Purdue welcomed all to the meeting and introduced CBC staff to the group.

Rob Parsons gave a presentation regarding the proposal; which included the background of local housing growth, the legal process for commissioning new school places, the responsibility of the Council and the stages and length of the process involved.

Lydia Braisher advised on the admissions aspect of the proposed expansion. Sarah Hughes advised on the Community Sports Building and of the public meeting that is to be held at the village hall on 12 April regarding this new facility

Query / comment	Answer / response
How will the extra 15 children be accommodated?	We will not admit more than 45 and we will organise the school as the numbers increase. We could mix classes. We have extra flexibility currently in years 3 and 4 and can go over 30.
How will the school grow?	It will grow from the bottom up, which is the normal way to grow a school.
Will the school be able to fund the new teachers as the numbers grow?	The school can apply to the Council's Revenue Growth Fund. This has been established to help fund such situations. The school will not be required to fund the growth from its current resources.
If the school did not take 'out of catchment' children would the current school site be big	No

enough?	
Looking to the long term – has any consideration been given to a possible change for the school from a lower of a primary?	The Council has no policy to change from 3 tier to 2 tier and is not promoting this. The proposal is to build a new lower school, not a primary. However, the Council is not the decision maker for academy proposals and, in addition, maintained schools can now propose and implement changes to their age range, by up to 2 years, without the Council's permission.
Are there sufficient places within the middle and upper school that our children feed into?	Yes, Arnold currently attracts children from Luton, and Harlington Upper has taken children from Luton and Dunstable in recent years.
Will the SEN provision be increased?	We will increase from 6 to 8, which would mean an extra member of staff.
Where will the wrap-around care be provided?	This will be identified following conversations between the school and the Council
Is the school self sufficient in all but sports facilities, for which we will need to use the Community Sports Building?	The school will be sufficient for all its needs, and it will be an 'added extra' for the school to use the Community Sports Building.
Will the school have use of the playing fields?	The playing fields are for use by both the school and the local community. The school will have a defined time for its use. This has yet to be agreed. There will need to be a safeguarding policy to take account of this. It is not unusual, within Central Beds, for a school to share such facilities with the public.
How will the Community Sports Building and playing fields be managed?	The Parish Council will be responsible for the management of both and will need to enter into an agreement with the school re their use. The Parish Council have assured CBC that they will agree usage with the school before looking at other community use. These are the conversations that will need to be had.
Will the preschool be accommodated on the new site?	Yes. The preschool will be invited to contribute on the design of the building.
What has been the school's involvement so far regarding the proposal?	The Council has met with the Head teacher, Chair of Governors and the Diocese previously to discuss the proposal. The HT has discussed the proposal with a few parents to date and has also attended a few meetings. Revenue funding from the Council's Growth Fund will help to cover future leadership team costs and any back-filling that is required to deliver the project.
How much of the school's current 'stuff' will need to be transferred to the new site?	The Council will be providing the school with a budget to fully 'kit-out' the new school with furniture and fittings. How much is taken to the new site from the old school will be up to the school.

Will the new school be able to accommodate all of the children, when at full capacity, in one place?	Yes, we are confident that a 1.5 FE school will be sufficient to accommodate catchment demand in the future
What will happen to the current school site? If more houses are built on the current site this will add to the number of children in the village seeking places.	There have been no discussions so far re the future use. The current site is in mixed ownership between the Council and the Diocese. If we move to dispose of the site there are processes that have to be followed as directed by the Secretary of State.
Have you considered having a sub group, from the Governing Body, that could be more involved with the project?	We can have a discussion regarding a pre-project group, which could then be split into smaller groups.
When can we bring together the Parish Council with the school to discuss the proposal?	Rob Parson will do this, but needs to meet with each of the stakeholders separately at first i.e. the Governing Body, the Parish Council, and the Preschool. Rob has commissioned a report which will be the basis for the first stage for these conversations.
With the school to be sited at the far end of the village, this will lead to increased vehicle movements to the school.	The school's travel plan will be refreshed but it is intended that many children will walk. This is a local school for local children. The Council and the Governing Body are under a legal duty to promote sustainable travel. But the school will be no longer on a main road.
The speed limit as you approach the village at that end is still currently 60 mph. The speed restriction sign is on the wrong side of Obelisk Way.	The Council's planners will consider this and will look at the surrounding roads.

Sarah Hughes reminded staff and governors of the meeting that is to be held at the village hall on 12 April. All are invited to attend in order to help shape the usage for the new Community Sports building.

Rob Parsons encouraged all staff and governors to respond to the consultation, both as groups and also as individuals.

The meeting closed at 5.30 pm

**Consultation on the proposed expansion of
Silsoe CofE VC Lower School**

Queries / comments raised at the public meeting
held at Silsoe CofE VC Lower School
on Monday 17 March 2014 at 7.00 pm



Meeting led by –

Rob Parsons – Head of School Organisation, Admissions & Capital Planning
Lydia Braisher – Admissions Manager
Sarah Hughes – Community Engagement Manager
Susan Purdue – Head teacher, Silsoe CofE VC Lower School
Reverend Holroyd – Chair of Governors, Silsoe Cof E VC Lower School

Note taker - Sue Barrow – Information Manager

Susan Purdue welcomed all to the meeting and introduced CBC staff to the attendees.

Rob Parsons gave a presentation regarding the proposal; which included the background of local housing growth, the legal process for commissioning new school places, the responsibility of the Council and the stages and length of the process involved.

Lydia Braisher advised on the admissions aspect of the proposed expansion. Sarah Hughes advised on the Community Sports Building and of the public meeting that is to be held at the village hall on 12 April regarding this new facility

Query / comment	Answer / response
How will you accommodate the extra children?	It will be a decision for the school's Governing Body as to how classes are organised. Over the past few years the school has strived to have single year group classes. We are restricted to 30 for infant classes. We will be able to make these decisions once we are aware of numbers but we will strive for the best organisation of classes.
Will the school be able to maintain the high quality of education with such large classes?	It is the aspiration of the Governing Body to ensure that the good education we offer here will be carried forward to the brand new school and its fantastic facilities. The size and layout of the current school site creates challenges that we will not have to deal

	with at the new school. It will be designed to accommodate the increased number of pupils The school will have a much larger budget and will benefit from the flexibility that the increased economy of scale will bring
Which year group would use the additional classroom that may be needed for September 2015?	If we need to bring in a temporary unit for one year from September 2015 to enable us to accommodate all of our catchment children, the school will decide which children will be required to use it.
How many children will the new school be able to accommodate?	The proposal is to build a 300 place school but this will also provide space to enable the pre-school children to be accommodated. The size will give the school flexibility and will accommodate the expanded SEN BESD unit.
Will the new school have a hall that can accommodate all of the children in one space?	The Governing Body will push for this, so that it can be used for collective worship.
Has the requirement to serve additional free school meals been taken into consideration? Will the new school have a separate dining room?	We are very aware of this requirement and we will need to consider this when deciding upon the design of the school. The requirements for education do not remain the same for very long.
Will the school continue to be a Church of England school?	Yes. There will be no change. The Diocese has been involved in and is supportive of the project. The school has moved twice already since its creation.
Is the school to pursue conversion to academy status?	No. The benefits that come with academy status have diminished and the Governing Body have much the same level of responsibility of academy directors. Because of this, the number of schools seeking to convert to academy status has reduced considerably.
Will the SEN provision at the school be increased?	We will increase from 6 to 8, which would mean an extra member of staff. We will also have the opportunity to ensure that the new provision is designed specifically for the children.
Will the preschool be accommodated on the new site?	Yes. The preschool will also be invited to contribute to the design of the building. It is hoped that facilities can be shared between the school and the pre-school.
As advised in the presentation, attendance at the pre-school will no longer be a guarantee of subsequent access to the school	This is correct. The Schools Adjudicator has directed that this be removed from a school's admission criteria. This must be removed with effect from September 2016.
By increasing the size of the school, and relocating it to the far end of the village, this	This will be addressed during the Planning process and the school's travel plan will be refreshed

<p>will lead to increased vehicle movements to the school. When will this be addressed?</p>	<p>The Council and the Governing Body are under a legal duty to promote sustainable travel. We are creating extra places for local children so it is hoped that many will walk to school.</p>
<p>Many parents have no option but to drive. Many of those that will walk will have to cross very busy roads. The village is used as a rat-run to avoid the Clophill roundabout. Many parents do not walk because of the dangers.</p>	<p>These concerns will be considered by our Planning colleagues but we have to accept that the school will be busy at certain times of the day. Most of Central Bedfordshire is rural and we cannot provide car parking for all but the school will fill from its catchment area. The school is aware of these concerns but one of the great advantages of the new site is that the school will be no longer on a main road. The Parish Council is also aware of these issues, in addition to the 108,000 visitors that Wrest Park can expect this year, who will all have to come through the village.</p>
<p>Will the Council be helping the HT with the project?</p>	<p>Yes, the Council will work with the school to ensure that the process is as easy as possible and that disruption is kept to a minimum. Revenue funding is available to the school to help fund any back-filling that is required while the school's leadership team work on the project.</p>

Sarah Hughes reminded staff and governors of the meeting that is to be held at the village hall on 12 April. All are invited to attend in order to help shape the usage for the new Community Sports Building.

This message was repeated by Ian Kelly, on behalf of Silsoe Parish Council. The Parish Council need to engage with the people who are going to use the building and work to handle each group's expectation

Rob encouraged all present to respond to the consultation.

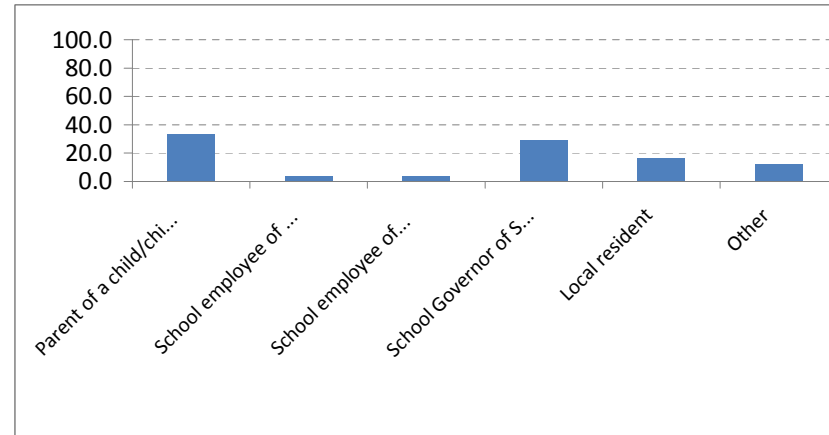
The meeting closed at 8.20 pm

**Silsoe Lower School Results
Based on 24 responses**

Appendix E

Q1 - Are you a:

	Frequency	Percent	Valid Percent
Valid Parent of a child/children at Silsoe CofE VC Lower School	8	33.3	33.3
School employee of Silsoe CofE VC Lower School	1	4.2	4.2
School employee of another school in the area	1	4.2	4.2
School Governor of Silsoe CofE VC Lower School	7	29.2	29.2
Local resident	4	16.7	16.7
Other	3	12.5	12.5
Total	24	100.0	100.0

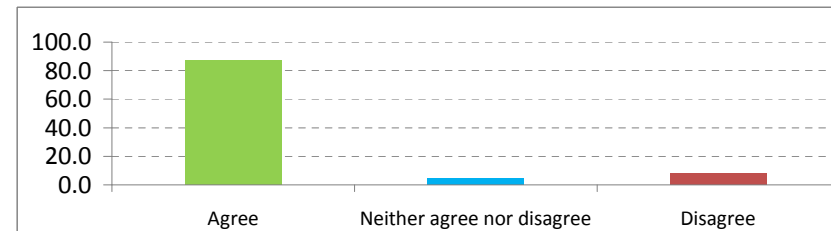


Q1.a - If other, please specify:

	Frequency	Percent	Valid Percent
Valid Diocesan authority	1	4.2	33.3
Grandparent	1	4.2	33.3
Local Authority Officer	1	4.2	33.3
Total	3	12.5	100.0
Missing	21	87.5	
Total	24	100.0	

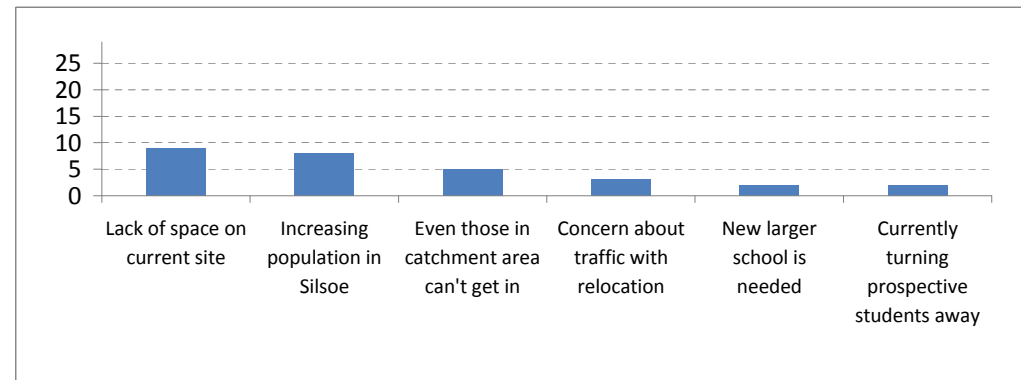
Q3 - Do you agree or disagree with the proposal to relocate and expand Silsoe CofE VC Lower School?

	Frequency	Percent	Valid Percent
Valid Agree	21	87.5	87.5
Neither agree nor disagree	1	4.2	4.2
Disagree	2	8.3	8.3
Total	24	100.0	100.0



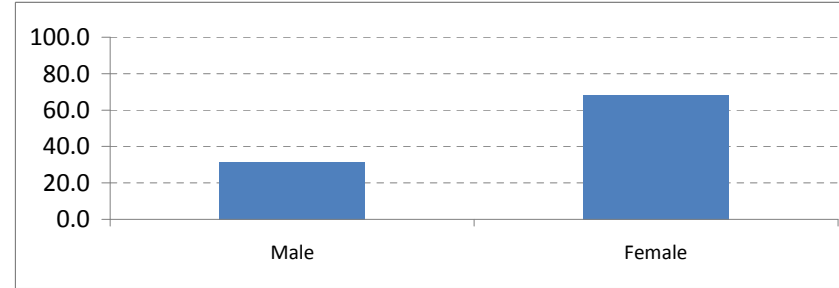
Q4 - Please give us your reasons why you agree or disagree with the proposed relocation and expansion of Silsoe CofE VC Lower School

Topic	Frequency
Valid Lack of space on current site	9
Increasing population in Silsoe	8
Even those in catchment area can't get in	5
Concern about traffic with relocation	3
New larger school is needed	2
Currently turning prospective students away	2



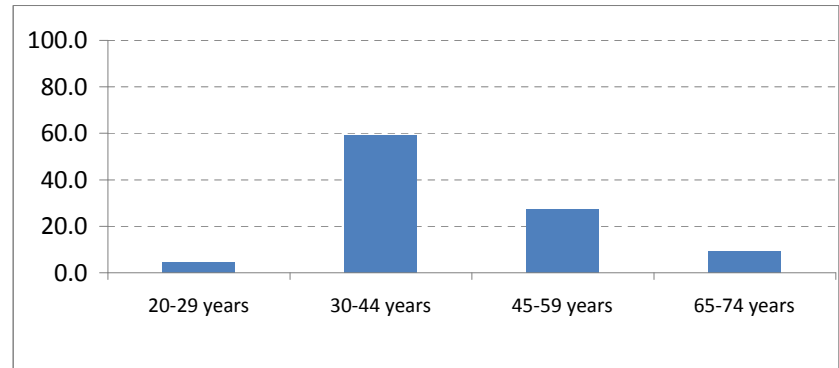
Q5 - Are you:

		Frequency	Percent	Valid Percent
Valid	Male	6	25.0	31.6
	Female	13	54.2	68.4
	Total	19	79.2	100.0
Missing		5	20.8	
Total		24	100.0	



Q6 - What is your age?

		Frequency	Percent	Valid Percent
Valid	20-29 years	1	4.2	4.5
	30-44 years	13	54.2	59.1
	45-59 years	6	25.0	27.3
	65-74 years	2	8.3	9.1
	Total	22	91.7	100.0
Missing		2	8.3	
Total		24	100.0	



Q7 - Do you consider yourself to be disabled?

	Frequency	Percent	Valid Percent
Valid No	20	83.3	100.0
Missing	4	16.7	
Total	24	100.0	

Q8 - To which of these groups do you consider you belong?

	Frequency	Percent	Valid Percent
Valid White British	21	87.5	100.0
Missing	3	12.5	
Total	24	100.0	

Q9 - What is your postcode?

	Frequency
Valid	
MK430TS	1
MK45 1EE	2
MK45 2US	1
MK45 4DR	1
MK45 4EA	2
Mk45 4EB	1
MK45 4EL	1
MK45 4EQ	1
MK45 4ER	1
MK45 4FD	1
MK45 4FY	1
Mk45 4lp	1
MK45 4QX	1
MK45 4RU	1
MK45 4SR	2
MK45 5BQ	1
MK454FZ	1
mk455du	1
SG17 5TQ	1
Total	22
Missing	2
Total	24

From: Eileen Bigg
Sent: 06 June 2014 11:06
To: Edwina Grant
Cc: Jon Reynolds; David Morton
Subject: Silsoe CE VC Lower School - Statutory Notice re relocation and expansion of the school

The Diocese of St Albans fully supports the relocation and expansion of Silsoe Church of England Voluntary Controlled Lower School. This is necessary for the children of the village. The headteacher is very capable of handling this important change in the life of the school.

Kind regards,

Jon Reynolds

Director of Education, Diocese of St Albans (01727 818171)

Holywell Lodge, 41 Holywell Hill, St Albans AL1 1HE

Visit www.stalbans.anglican.org/schools for resources for teachers, governors and clergy

St Albans Diocesan Board of Finance is a company limited by guarantee registered in England and Wales No 145227. Registered as a charity No 248887. www.stalbans.anglican.org